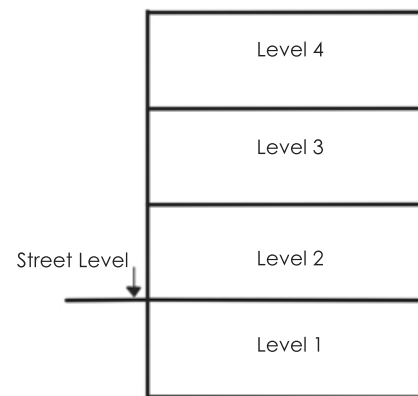
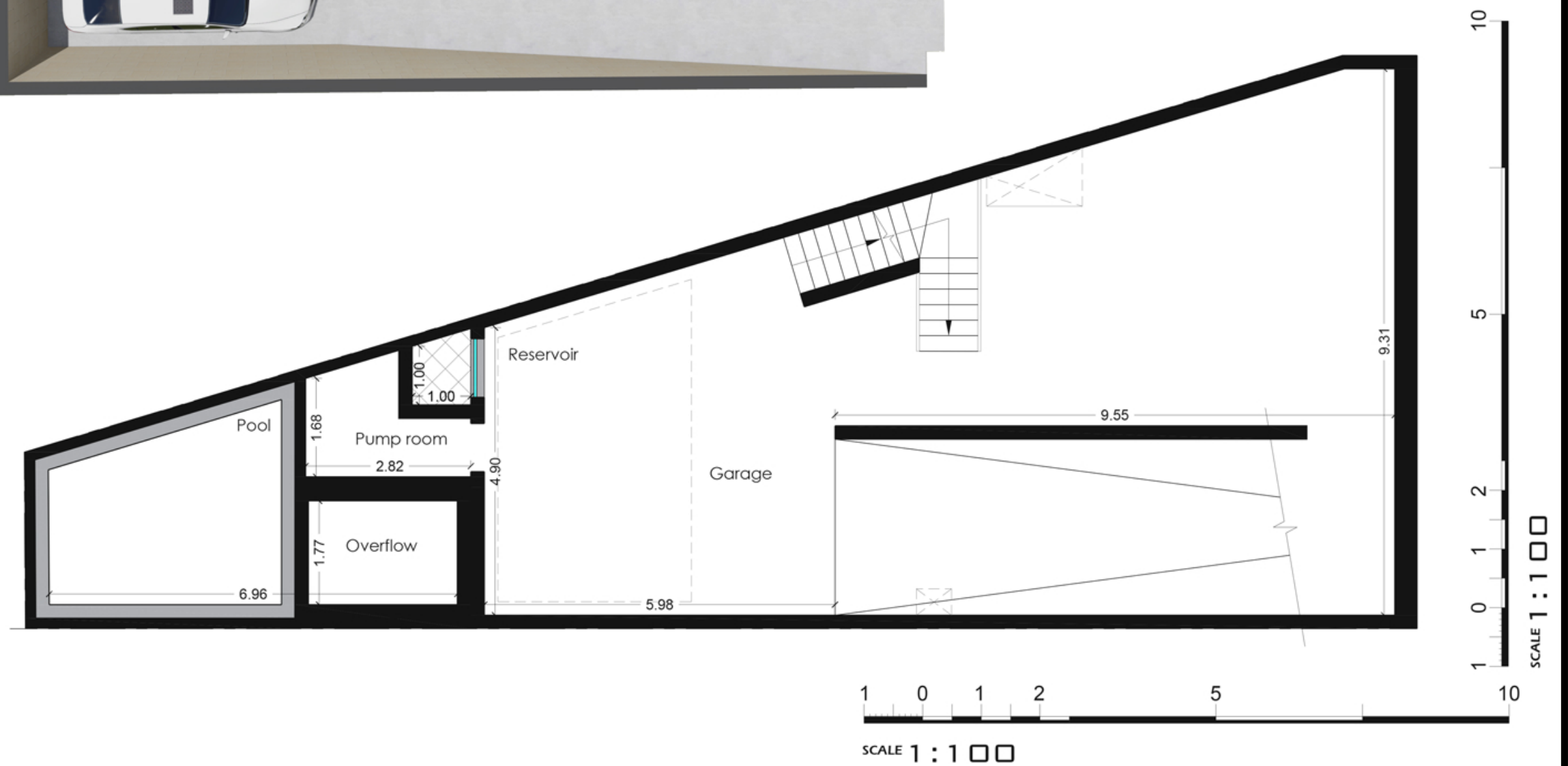
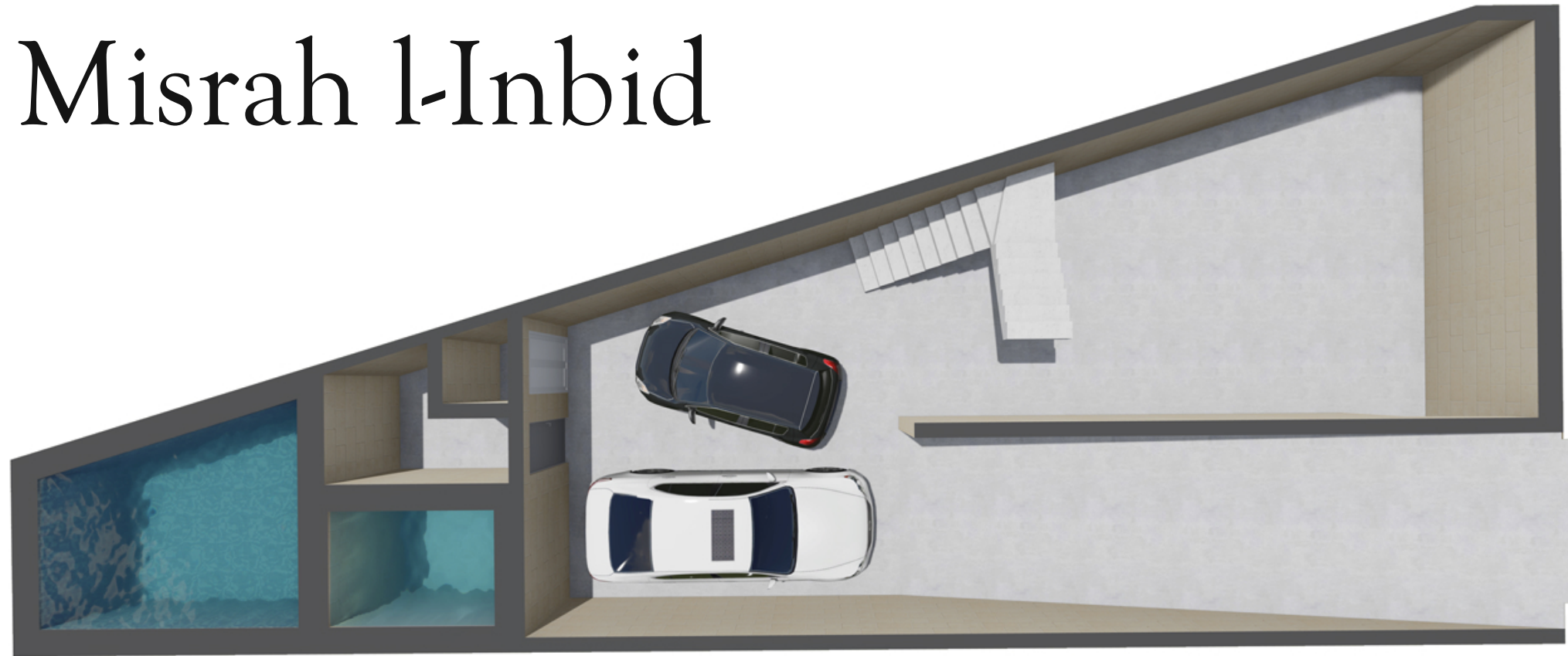


Misrah l-Inbid

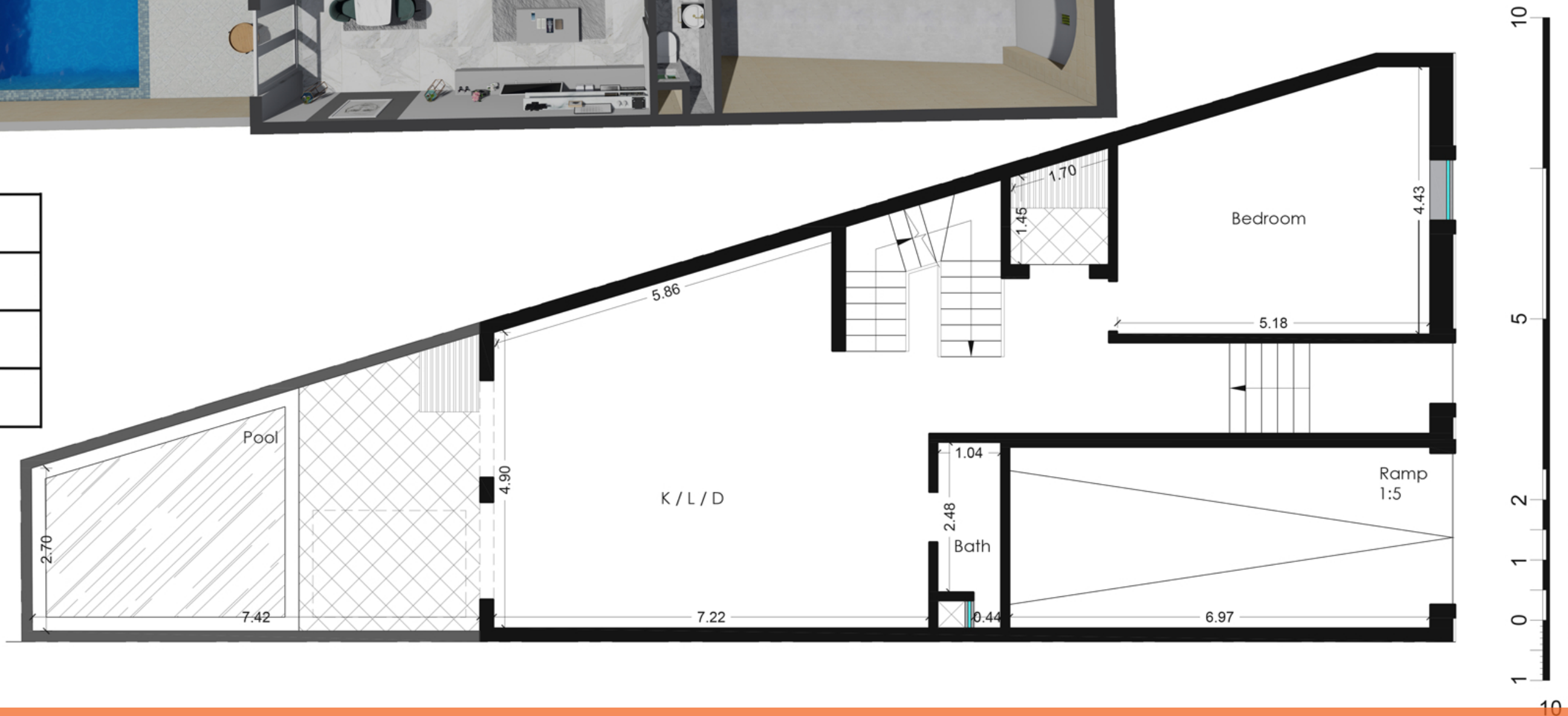
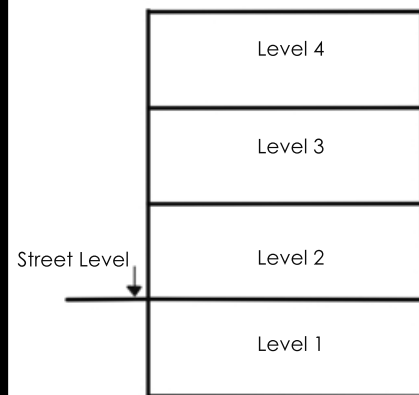


Plot I
Basement Floor (Level 1)

Artistic Impression Only
Beams may protrude. Minimum
internal height under beam is 2.1m

Internal : 155 m² External : 1 m²
Total Area : 156 m² (circa)

Misrah l-Inbid

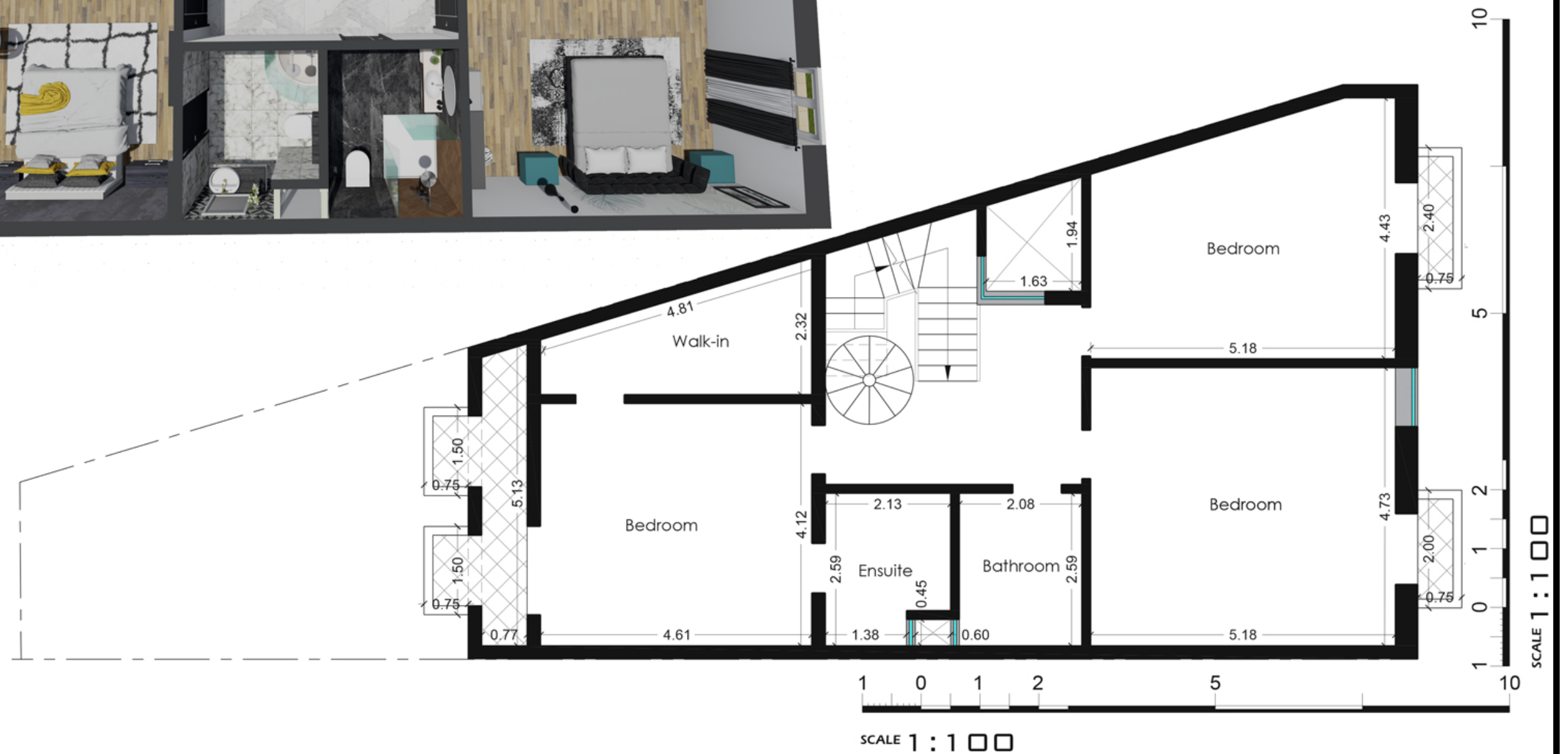
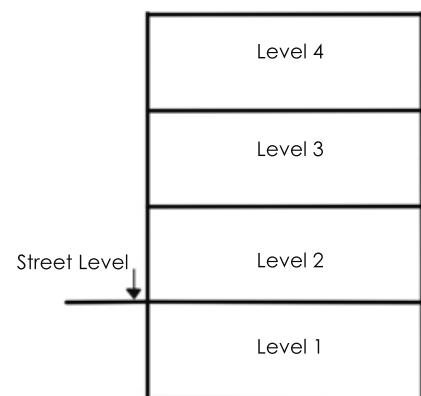


Plot I
Ground Floor (Level 2)

Artistic Impression Only
Beams may protrude. Minimum
internal height under beam is 2.1m

Internal : 121 m² External : 34 m²
Total Area : 155 m² (circa)

Misrah l-Inbid

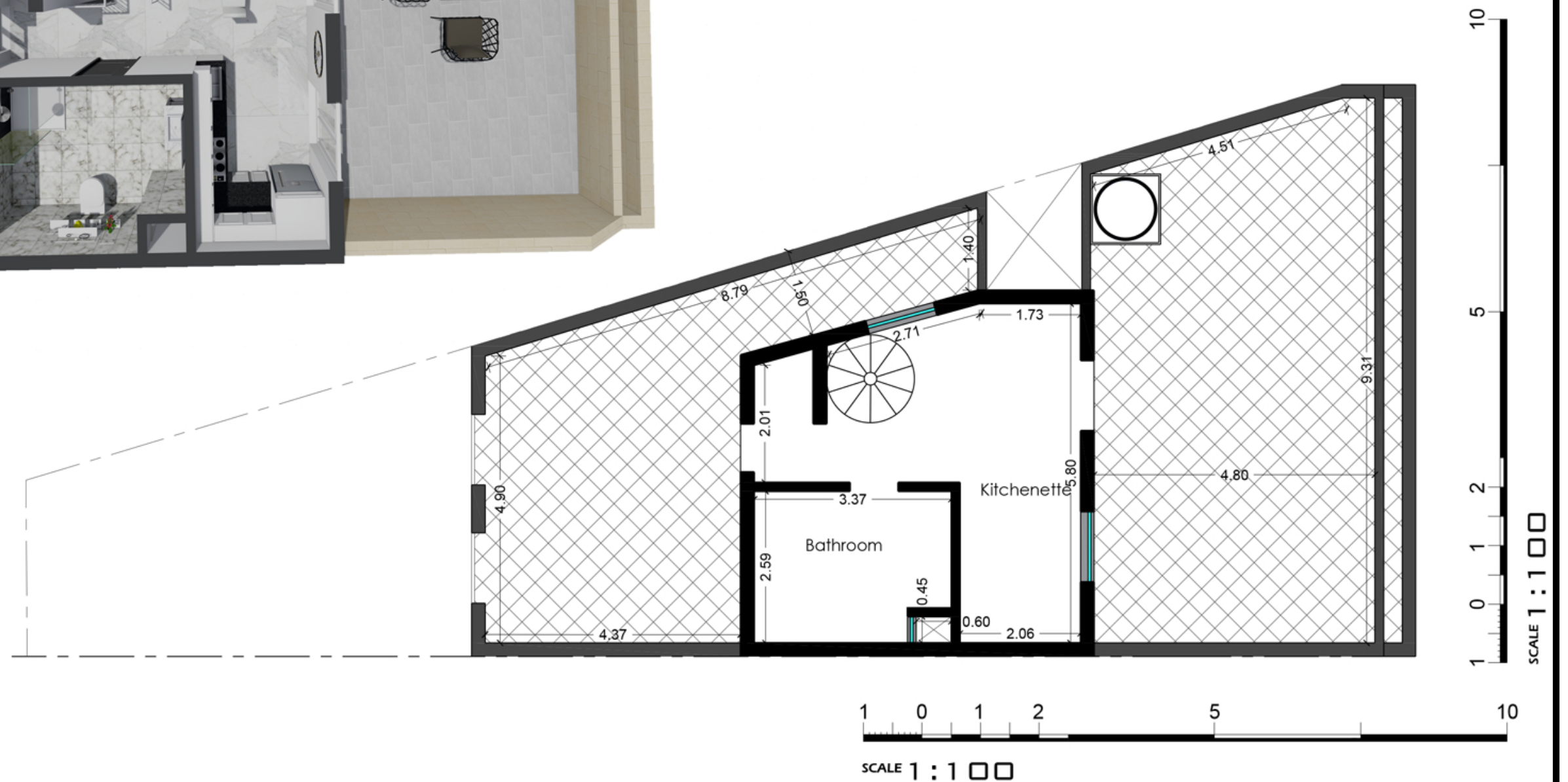
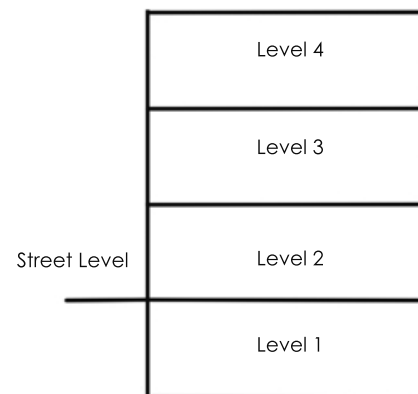


Plot 1
First Floor (Level 3)

Artistic Impression Only
Beams may protrude. Minimum
internal height under beam is 2.1m

Internal : 115 m² External : 9 m²
Total Area : 124 m² (circa)

Misrah l-Inbid



Plot I
Receded Floor (Level 4)

Artistic Impression Only
Beams may protrude. Minimum
internal height under beam is 2.1m

Internal : 35 m² External : 80 m²
Total Area : 115 m² (circa)